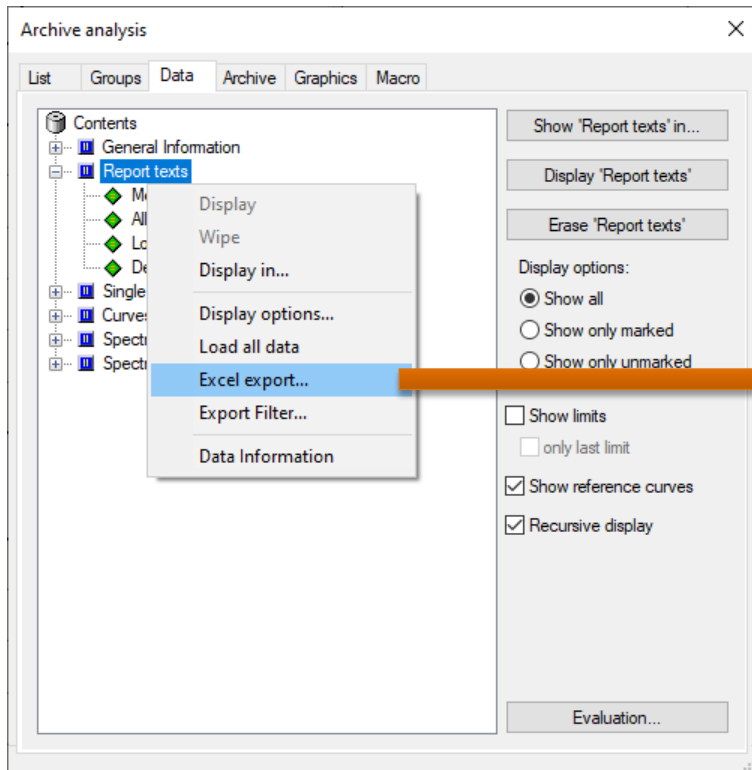


Export Complete Measurement Reports

To get a tabular list of all measurements including the defect reports, go to the *Data* page, right-click on “Report texts” and choose “Export”.

The report is saved as an html file which can be directly opened with Excel.

You can also export the report for only one measurement. Unfold the “Report texts” node and call the export for one of the sub-nodes. If you export the “Measurement report” node, you will get the data for the currently highlighted measurement. If you export from “All reports”, you get the list of all measurements.



All reports (concatenated) 02.09.2016 09:15 — 02.09.2016 09:38

Time	Serial number	Type	Base type	Test bench	Group	Test result	Count	Defect code	Defect reports	State	Instrument + Parameter	Location / Channel	Sensor	Value	Limit	Position
02.09.2016 09:15	1503154	C635.6.35.134	BT.22	390 D-MT	—	o.k.										
02.09.2016 09:16	1503157	C635.6.35.134	BT.22	390 B-MT	—	o.k.										
02.09.2016 09:19	1503160	C635.6.35.134	BT.22	390 B-MT	—	n.o.k.	1	810	Manovrabilită dura	Shifting	ShifForceTishh3Rin MaxGearShifFs	SForceGear []	SForceGear	131,459	120	22.9
02.09.2016 09:22	1503159	C635.6.35.134	BT.22	390 B-MT	—	o.k.										
02.09.2016 09:22	1503162	C635.6.35.134	BT.22	390 D-MT	—	o.k.										
02.09.2016 09:25	1503159	C635.6.35.134	BT.22	390 B-MT	—	o.k.										
02.09.2016 09:26	1503155	C635.6.35.134	BT.22	390 C-MT	—	o.k.										
02.09.2016 09:29	1503161	C635.6.35.134	BT.22	390 C-MT	—	o.k.										
02.09.2016 09:32	1503165	C635.6.35.134	BT.22	390 C-MT	—	o.k.										
02.09.2016 09:32	1503168	C635.6.35.134	BT.22	390 B-MT	—	n.o.k.	1	810	Manovrabilită dura	Shifting	ShifForceTishh3Rin MaxGearShifFs	SForceGear []	SForceGear	136,188	135	21.9
02.09.2016 09:34	1503102	C635.6.35.134	BT.22	390 C-MT	—	o.k.										
02.09.2016 09:35	1503166	C635.6.35.134	BT.22	390 B-MT	—	o.k.										
02.09.2016 09:37	1503177	C635.6.35.134	BT.22	390 C-MT	—	o.k.										
02.09.2016 09:38	1503182	C635.6.35.134	BT.22	390 B-MT	—	o.k.										

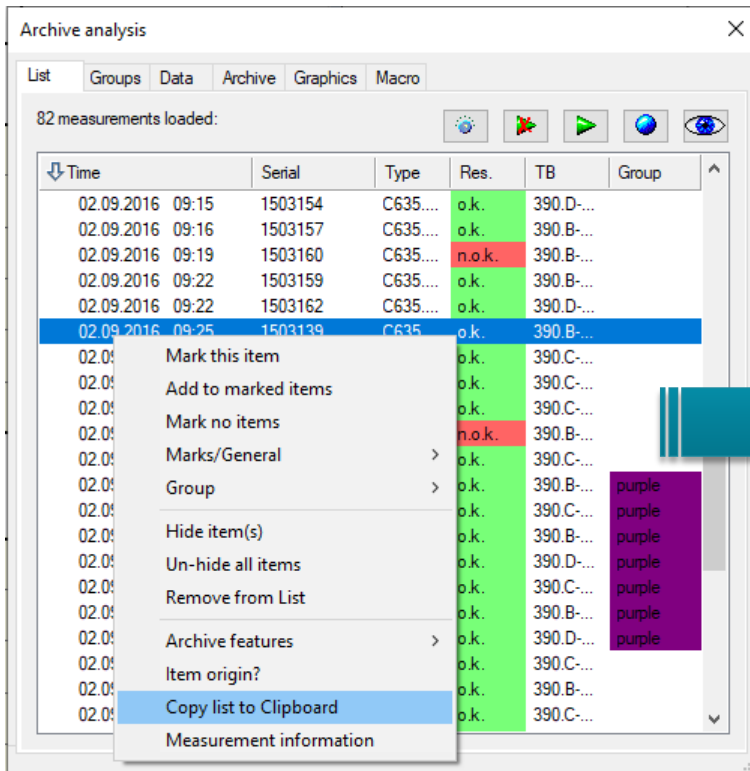
Note: only the first 20 defect messages are exported for each measurement.

Exporting the List of Measurements

You can easily export the list of measurements as shown in the *List* page as a table.

This export can be pasted directly to an Office document (like Word, Excel, PowerPoint), or saved as html file (which can in turn be opened by Excel).

To get the export, right-click on any list row and select “Copy list to Clipboard”:



Time	Serial number	Type	Test bench	Test result	Group
02.09.2016 09:15	1503154	C635.6.35.134	390.D-MT	o.k.	
02.09.2016 09:16	1503157	C635.6.35.134	390.B-MT	o.k.	
02.09.2016 09:19	1503160	C635.6.35.134	390.B-MT	n.o.k.	
02.09.2016 09:22	1503159	C635.6.35.134	390.B-MT	o.k.	
02.09.2016 09:22	1503162	C635.6.35.134	390.D-MT	o.k.	
02.09.2016 09:25	1503139	C635.6.35.134	390.B-MT	o.k.	
02.09.2016 09:26	1503155	C635.6.35.134	390.C-MT	o.k.	purple
02.09.2016 09:29	1503161	C635.6.35.134	390.C-MT	o.k.	purple
02.09.2016 09:32	1503165	C635.6.35.134	390.C-MT	o.k.	purple
02.09.2016 09:32	1503168	C635.6.35.134	390.B-MT	n.o.k.	purple
02.09.2016 09:34	1503102	C635.6.35.134	390.C-MT	o.k.	purple
02.09.2016 09:35	1503166	C635.6.35.134	390.B-MT	o.k.	purple
02.09.2016 09:37	1503177	C635.6.35.134	390.C-MT	o.k.	purple

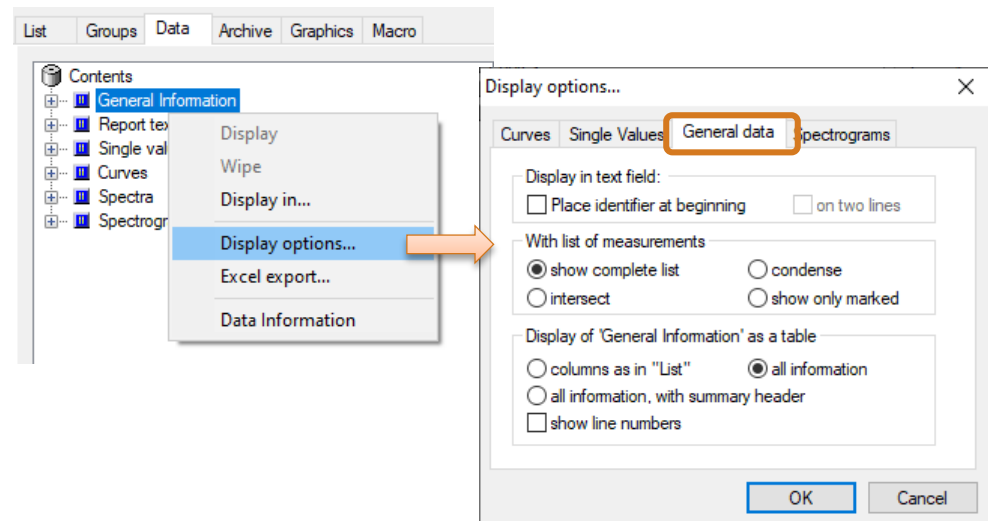
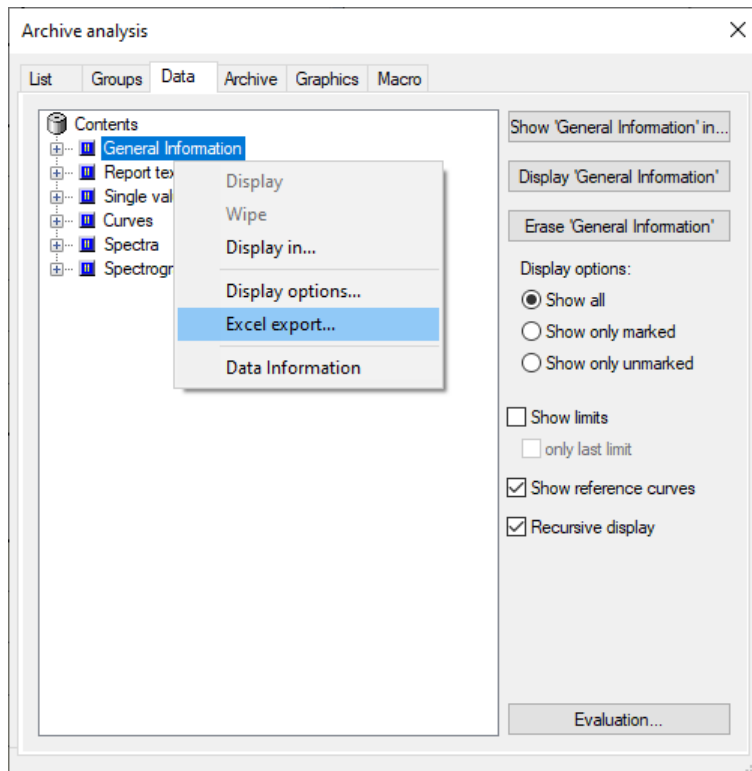
When you paste into an Office document, you get a regular table which can then be edited and formatted as any table in an Office document.

Exporting List of Measurements, Alternative

Instead of right-clicking on a measurement in the list and choosing “Clipboard Export” there, you can also call the Export function on the General Information node on the *Data* page:

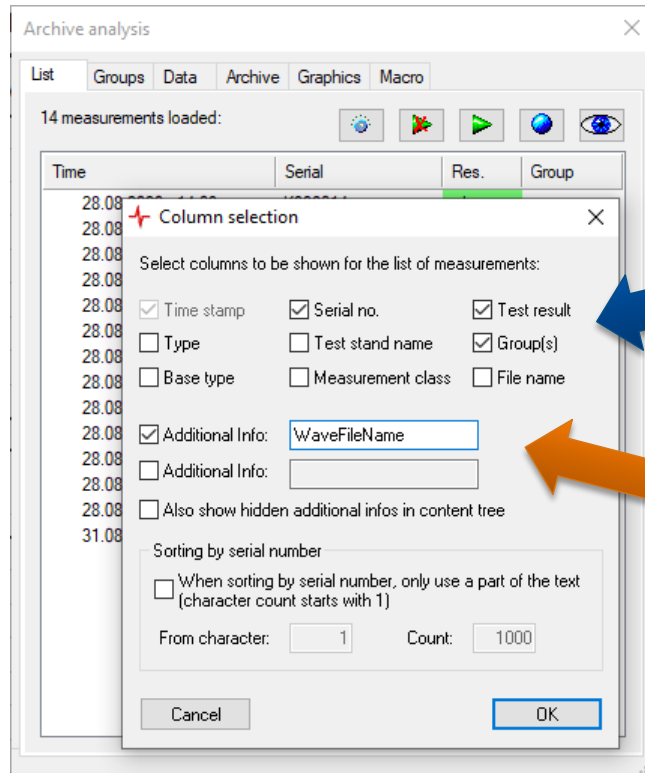
This export will always contain all information columns, while the export from the *List* page will contain only those columns as are currently shown on the *List* page.

You can also assign the “General Information” node to a List Text field on one of your layout pages and get a printable version of your list of measurements. When you show the list in a text field, you can specify additional display options:



Specifying the List Columns

Press the  button on the *List* page to get to the List Column Selection:



These are the standard columns which are always available

You can create additional columns by entering the name of any “additional info”. (Expand the “General Information” node in the contents tree on the *Data* page to find the names of the “additional info”s.)

